

COMFORTER WIDE SERIES

Rise



Comforter Tall Wide
PR-501T-28D

Softouch
with STAIN DEFENSE



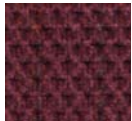
Palomino



Admiral



Evergreen



Cabernet



Comforter Small Wide
PR-501S-23



Comforter Medium Wide
PR-501M-26D



Comforter Large Wide
PR-501L-26D



Comforter Super 33 Wide
PR-502

Comforter Wide Series

The Comforter Wide Series offers five models with wider seats to accommodate people who need more space between the armrests. Weight capacities for these models are 375, 500 and 700 lbs., the highest in the industry. These models are constructed with the highest quality components and include dual or triple motors for reliable, steady lifting and reclining.



Rise.

Roll.

Rest.

Ride.



YOUR LIFE IN MOTION

COMFORTER WIDE SERIES



| | Comforter | Comforter | Comforter | Comforter | Comforter |
|--|-------------------|--------------------|--------------------|--------------------|---------------|
| Model Number | PR-501S-23 | PR-501M-26D | PR-501L-26D | PR-501T-28D | PR-502 |
| Size | Wide | Wide | Wide | Wide | Wide |
| Weight Capacity | 375 Lb. | 500 Lb. | 500 Lb. | 500 Lb. | 700 Lb. |
| Recline Positions | 3 | 3 | 3 | 3 | Independent |
| Standard Fabrics | 4 | 4 | 4 | 4 | 4 |
| Fabric Options | 32 | 32 | 32 | 32 | 32 |
| Chaise Seat | YES | YES | YES | YES | NO |
| Back Type | Seam | Seam | Seam | Seam | Seam |
| Head Rest Cover | YES | YES | YES | YES | YES |
| Arm Covers | YES | YES | YES | YES | YES |
| Battery Back Up | YES | YES | YES | YES | YES |
| Overall Width | 34.5" | 38.5" | 38.5" | 41" | 45" |
| Overall Height | 40" | 42" | 44" | 48" | 47" |
| Width Between Arms | 23" | 27.5" | 27.5" | 29.5" | 33" |
| Floor to Top of Seat | 18" | 19.5" | 20.5" | 22.5" | 21" |
| Seat Depth | 19.5" | 21.5" | 22.5" | 24" | 22" |
| Seat to Top of Back | 25" | 27" | 28.5" | 30" | 29" |
| Seat to Top of Arm | 6" | 7" | 5.5" | 6" | 7" |
| Floor to Back Edge of Seat Raised | 27.5" | 27.5" | 29" | 31" | 31" |
| Floor to Front Edge of Seat Raised | 24" | 23.5" | 25" | 26" | 27" |
| Seat Angle Raised | 15° | 16° | 16° | 18° | 12° |
| Floor to Top of Foot Rest Reclined | 23" | 23" | 23" | 23" | 21" |
| Floor to Top of Back Reclined | 32" | 32" | 33" | 36" | 39" |
| Back Angle Closed | 115° | 115° | 115° | 115° | 110° |
| Back Angle Reclined | 145° | 145° | 145° | 145° | 150° |
| Foot Rest Angle Closed | 90° | 90° | 90° | 90° | 90° |
| Foot Rest Angle Opened | 180° | 180° | 180° | 180° | 180° |
| Distance Required from Wall Reclined | 17" | 17" | 18" | 18" | 20" |
| Extension Reclined from Back of Seat to End of Foot Rest | 39" | 42" | 43" | 45" | 45" |
| Life Time Warranty, Chair Frame, Lift Frame, Recline Mechanism | YES | YES | YES | YES | 2 YRS. |
| Warranty on Electrical Parts | 3 Yrs. | 3 Yrs. | 3 Yrs. | 3 Yrs. | 1 Yr. |
| Pro Rated Years 4 Thru 7 | YES | YES | YES | YES | NO |
| Warranty on Mechanical Labor | 3 Yrs. | 3 Yrs. | 3 Yrs. | 3 Yrs. | 2 Yrs. |
| Warranty on Electrical Labor | 1 Yr. | 1 Yr. | 1 Yr. | 1 Yr. | 1 Yr. |
| Removable Back Standard | YES | YES | YES | YES | YES |
| Smart Tek System Standard | YES | YES | YES | YES | YES |
| Customizable | YES | YES | YES | YES | YES |
| Left Hand Control Option Available | YES | YES | YES | YES | YES |
| Extra Pocket Option Available | YES | YES | YES | YES | YES |
| Heat & Massage Option Available | YES | YES | YES | YES | YES |
| Foot Rest Extension Option Available | NO | NO | NO | NO | NO |
| Straight Lift Option Available | YES* | YES* | YES* | YES* | YES* |

*Straight lift option must be set at our factory prior to shipping for these models.

Sizes may vary depending on fabric, filling material, upholstery and carpet thickness. All measurements taken on concrete floor using levels and metal rulers.



501 M shown

Golden Craftsmanship

Each luxury lift & recline chair is hand crafted in our facility using decades of motion furniture experience.



501 M shown

Added Comfort and Safety

Designed to perform year after year using advanced technology backed by the best warranty.



501 M shown

Smart Engineering

Smooth, quiet lifting system offers a secure lift for the best performance.



Smart Tek

Our luxury lift & recliners are equipped with electronics able to assure a secure lift every time you need it.



Battery Backup System

Safety System

Batteries not included. Safety System is designed to bring chair from recline to seated position in the event of a power outage.



Custom Sizing...

One size doesn't fit all with Golden Technologies seat lift chairs.



Literature is current at time of printing. Golden Technologies reserves the right to make changes to the product or literature at any time.



Complies with UL 73 and CSA C22.2 No. 68

Listing # E112417



GOLDEN
technologies

YOUR LIFE IN MOTION

Golden Technologies • 401 Bridge Street, Old Forge PA 18518 • Tel: (800) 624-6374 • Fax: (800) 628-5165 • www.goldentech.com

SHT-WIDE-060109