

T R A D I T I O N A L S E R I E S

# Rise



*Full chaise pad coming soon!*

Cambridge  
PR-400



Williamsburg  
PR-747



Pioneer  
PR-643

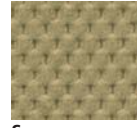
Softouch  
with STAIN DEFENSE



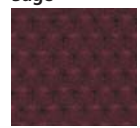
Cognac



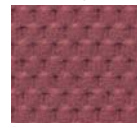
Sapphire



Sage



Mulberry



Rose

## Traditional Series

The Traditional Series features three models in classic styles that will subtly match any decor. The Cambridge and Williamsburg feature plush, overstuffed button backs for hours of comfort while the Pioneer offers a sleek, seam back and wood armrests for a style all its own.



Rise. Roll. Rest. Ride.



YOUR LIFE IN MOTION

TRADITIONAL SERIES



	Cambridge	Williamsburg	Pioneer
<b>Model Number</b>	<b>PR-400</b>	<b>PR-747</b>	<b>PR-643</b>
<b>Size</b>	Medium	Medium	Medium
<b>Weight Capacity</b>	375 Lb.	375 Lb.	375 Lb.
<b>Recline Positions</b>	3	3	3
<b>Standard Fabrics</b>	5	5	5
<b>Fabric Options</b>	28	32	32
<b>Chaise Seat</b>	NO	YES	YES
<b>Back Type</b>	Biscuit	Button	Seam
<b>Head Rest Cover</b>	YES	YES	YES
<b>Arm Covers</b>	YES	YES	NO
<b>Battery Back Up</b>	YES	YES	YES
<b>Overall Width</b>	33"	32.5"	29.5"
<b>Overall Height</b>	41.5"	44"	41"
<b>Width Between Arms</b>	20"	21"	21.5"
<b>Floor to Top of Seat</b>	19"	19.5"	19"
<b>Seat Depth</b>	20"	21.5"	21"
<b>Seat to Top of Back</b>	28"	28"	28"
<b>Seat to Top of Arm</b>	7"	6"	8"
<b>Floor to Back Edge of Seat Raised</b>	28"	28"	27.5"
<b>Floor to Front Edge of Seat Raised</b>	24"	24"	23"
<b>Seat Angle Raised</b>	20°	15°	20°
<b>Floor to Top of Foot Rest Reclined</b>	22"	23"	23"
<b>Floor to Top of Back Reclined</b>	33"	36"	34"
<b>Back Angle Closed</b>	110°	100°	115°
<b>Back Angle Reclined</b>	145°	130°	140°
<b>Foot Rest Angle Closed</b>	90°	90°	90°
<b>Foot Rest Angle Opened</b>	175°	180°	180°
<b>Distance Required from Wall Reclined</b>	20"	18"	18"
<b>Extension reclined from Back of Seat to end of Foot Rest</b>	41.5"	42"	40.5"
<b>Life Time Warranty, Chair Frame, Lift Frame, Recline Mechanism</b>	YES	YES	YES
<b>Warranty on Electrical Parts</b>	3 Yrs.	3 Yrs.	3 Yrs.
<b>Pro Rated Years 4 Thru 7</b>	YES	YES	YES
<b>Warranty on Mechanical Labor</b>	3 Yrs.	3 Yrs.	3 Yrs.
<b>Warranty on Electrical Labor</b>	1 Yr.	1 Yr.	1 Yr.
<b>Removable Back Standard</b>	YES	YES	YES
<b>Smart Tek System Standard</b>	YES	YES	YES
<b>Customizable</b>	NO	NO	NO
<b>Left Hand Control Option Available</b>	YES	YES	YES
<b>Extra Pocket Option Available</b>	NO	YES	YES
<b>Heat &amp; Massage Option Available</b>	YES	YES	YES
<b>Foot Rest Extension Option Available</b>	NO	NO	NO
<b>Straight Lift Option Available</b>	YES	YES	YES

Sizes may vary depending on fabric, filling material, upholstery and carpet thickness. All measurements taken on concrete floor using levels and metal rulers.



**Smart Tek**

Our luxury lift & recliners are equipped with electronics able to assure a secure lift every time you need it.



501 M shown

**Golden Craftsmanship**

Each luxury lift & recline chair is hand crafted in our facility using decades of motion furniture experience.



501 M shown

**Added Comfort and Safety**

Designed to perform year after year using advanced technology backed by the best warranty.



501 M shown

**Safety System**

Batteries not included. Safety System is designed to bring chair from recline to seated position in the event of a power outage.



Battery Backup System

**Smart Engineering**

Smooth, quiet lifting system offers a secure lift for the best performance.



Literature is current at time of printing. Golden Technologies reserves the right to make changes to the product or literature at any time.



Complies with UL 73 and CSA C22.2 No. 68

Listing # E112417



**GOLDEN** technologies

YOUR LIFE IN MOTION